

PART OF E 1/2 SEC. 17, T.5N., R.1W., S.L.B. & M.
SOUTHRIDGE SUBDIVISION NO. 4

119

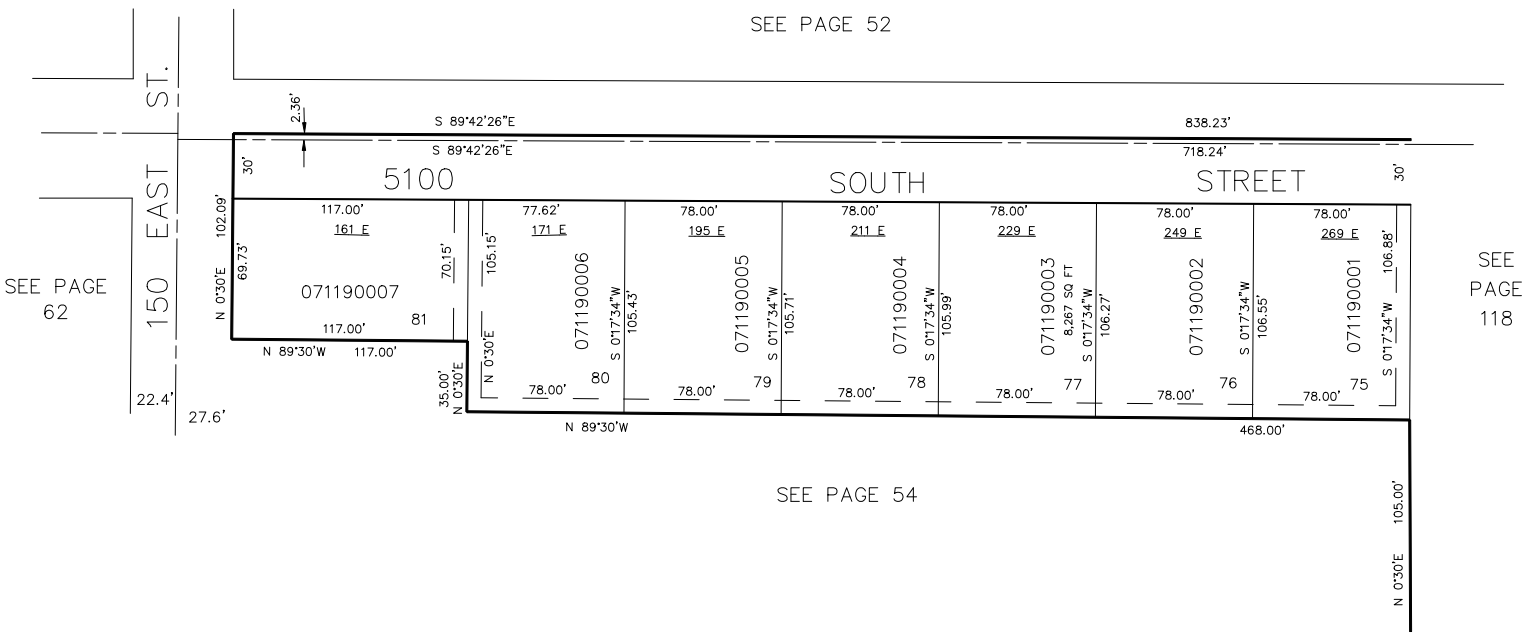
LOTS 75-81

PAGE 120 OMITTED

IN WASHINGTON TERRACE CITY

TAXING UNIT: 24

SCALE 1"=50'



7' UTILITY & DRAINAGE EASEMENTS
EACH SIDE OF PROPERTY LINES AS
INDICATED BY DASHED LINES.
ALL EASEMENTS TO BE USED FOR
IRRIGATION, DRAINAGE & UTILITY
PURPOSES.

FOR COMPLETE ENG. DATA
SEE ORIG. DED. PLAT IN
BOOK 16 PAGE 15.